

THE BULLETIN

OKLAHOMA COUNTY MEDICAL SOCIETY

JANUARY / FEBRUARY 2022



2022 OCMS PRESIDENT

Sumit K. Nanda, MD and Family

JANUARY IS NATIONAL BLOOD DONOR MONTH



Oklahoma
Blood Institute

Donors will be offered a **NEW COVID-19** antibody test. This new test detects antibodies from either natural infection or vaccine response.

Testing is available Jan. 3 - 31 while supplies last.



Thank the
Donor



//

My four year old daughter has had to have and will continue to have multiple transfusions. Without your donation, that would not be possible. Thank you so much for taking time out of your life to help my daughter continue her fight!

- a grateful parent

Learn more about your health and save local lives
to celebrate National Blood Donor Month.

Call **877-340-8777** or visit **OBI.org**
to make an appointment.



SHERRY STETSON
GROUP

405.445.9675

EXPERIENCED REAL ESTATE PROFESSIONALS
OFFERING LUXURY CONCIERGE SERVICES



STETSON BENTLEY
REAL ESTATE

a strong move

SHERRY@STETSONBENTLEY.COM

STETSONBENTLEY.COM



Newsweek Magazine - #9 for 2021
Small Teams By Volume



WORLDWIDE ERC



313 Northeast 50th Street, Suite 2
Oklahoma City, OK 73105-1830
phone: 405-702-0500 fax: 405-702-0501
email: ocms@okcountymed.org

www.okcountymed.org

OFFICERS

Sumit K. Nanda, MD President
Michelle L. E. Powers, MD. President-Elect
Matthew J. Jared, MD. Vice-President
Bradley J. Margo, MD Secretary-Treasurer

BOARD OF DIRECTORS

R. Matt Atkins, MD	Latisha Heinlen, MD
Michael S. Cookson, MD	T. Craig Kupiec, MD
Basel S. Hassoun, MD	Katherine Mansalis, MD
Alan Hawxby, MD	Ryan T. Morgan, DO
Bret R. Haymore, MD	Pooja Singhal, MD

Katherine Shepherd, DO

BOARD OF CENSORS

R. Kevin Moore, MD
Lisa J. Wasemiller-Smith, MD
Basel S. Hassoun, MD

EXECUTIVE OFFICE

Alison Fink Executive Director
Rebecca Carr. Associate Director

EDITORIAL BOARD

William P. Truels, MD
Editor

S.S. Sanbar, MD, PhD, JD
Assistant Editor

Anureet K. Bajaj, MD	Hanna A. Saadah, MD
H. K. Kurkjian, MD	Christopher Jordan, MD
Jennifer Morris, MD	Pooja Singhal, MD
Betsy M. Nolan, MD	Michael D. Taylor, MD
Tomás P. Owens, MD	Elizabeth A. Wickersham, MD
Janet G. Rodgers, MD	

Ideas and opinions expressed in editorials and feature articles are those of the authors and do not necessarily express the official opinion of the Oklahoma County Medical Society.

THE BULLETIN

January/February 2022

Volume 95 Number 1

Six Annual Publications Circulation 1500

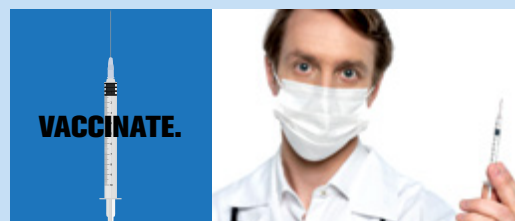
TABLE OF CONTENTS

Thank You to Sponsors and Advertisers	6
President's Page	8
Dean's Page	10
About The Cover	13
Law & Medicine	14
OCMS Inauguration.....	18
2021 Rhinehart Award Winner	19
Director's Dialogue.....	20
Alliance Membership	22
In Memoriam.....	25
Doctor of the Day Program.....	27
Under the Covers	28
CME Information	34
Professional Registry	34
The Poet's Spot.....	36

ON THE COVER

The Nanda Family

PHOTOGRAPHY BY JOHN DOUGLAS



COMMUNITY BANK
ADVANTAGES
WITH A PRIVATE BANK
EXPERIENCE



TAILORED
BANKING FOR
THE BUSY
EXECUTIVE

*Samantha Robertson
& Stephanie Comer*

VALLIANCE.BANK | 405.286.5700



WE ARE ENGEL & VÖLKERS.

Buying or selling a home isn't just business, it's personal.

That's why the service I provide is tailored to your specific needs and delivered with care. I am proud of my in-depth knowledge of my hometown market, Edmond, Oklahoma, and my experience of exceeding the expectations of my clients to guide them in following their dream, home.



Amy Stoker, Engel & Völkers Edmond

405-531-7663 or 405-888-8701

102 S Broadway, Suite 100

amy.stoker@evrealestate.com

amystoker.evrealstate.com

ENGEL & VÖLKERS®
AMY STOKER



You take care of your patients.
We take care of your financial future.



Trust Company Oklahoma

TrustOk.com | (405) 840-8401

2516 NW Expressway | Oklahoma City



Protecting Your Assets.
Growing Your Wealth.
Advising You For Life.

GOLD

Oklahoma Blood Institute

BRONZE

First Liberty Bank
INTEGRIS Health
McBride Orthopedic Hospital
OU Medicine
PLICO

THANK YOU TO OUR ADVERTISERS!

EKB Home
Engel & Völkers, Amy Stoker
INTEGRIS Hospice
NBC Oklahoma

OK Allergy & Asthma Clinic
Oklahoma City Ballet
OSMA Health
Quail Creek Bank

Stetson Bentley
Real Estate
Valliance Bank
Trust Co. of Oklahoma

Let's **Work Together**
to Ensure You **Stay Together.**

At INTEGRIS Health, we spend every day partnering with patients to help keep them well and to improve the overall health of all Oklahomans. So here are some important tips to ensure you stay in the best possible health, for you and your family.

- Watch your blood pressure and cholesterol and never ignore chest pain.
- Don't skip regular wellness checks or screenings like a heart scan, mammogram, or your colonoscopy – they can all be lifesavers.
- Remember, there are options to treat joint pain and discomfort.
- Don't delay scheduled or elective procedures.

As your most trusted partners in health, we're always ready to help you manage your health care – so **schedule an appointment today.**

INTEGRIS
HEALTH

For you. For health. For life.

[integrisk.com](https://www.integrisk.com)



Megan Greve, RCID; Brenda Helms, RCID

OKLAHOMA'S LUXURY CABINET & DESIGN AUTHORITY



- design + build controls •
- new construction •
- remodel •
- fine cabinetry and finishings •



edmond
kitchen
bath
home llc

243 N Broadway
Edmond
405.285.1926
Edmond Kitchen.com



Sumit K. Nanda, MD

President's Page

SUMIT K. NANDA, MD

AS PHYSICIANS, WE ARE COMMITTED TO DOING GOOD FOR OUR PATIENTS AND OUR COMMUNITY. THE ART AND SCIENCE OF HEALING PATIENTS TO REDUCE THEIR DISCOMFORT, TO IMPROVE THEIR QUALITY OF LIVES, TO PROLONG THEIR LIVES, IS SECOND NATURE TO US. OUR COMMITMENT TO HELPING PATIENTS CAN EXTEND BEYOND OUR DAILY CLINICAL DUTIES WITH OUR SUPPORT OF HEALTHCARE NONPROFIT ORGANIZATIONS. YOUR OKLAHOMA COUNTY MEDICAL SOCIETY HAS SERVED AS AN INCUBATOR FOR THE FOLLOWING PHILANTHROPIC ORGANIZATIONS THAT HAVE TANGIBLY IMPROVED HEALTHCARE ACCESS AND QUALITY IN CENTRAL OKLAHOMA.

Health Alliance for the Uninsured (HAU)

HAU is a collaboration of physicians, hospitals, and other community partners whose goal is to increase access to primary and specialty care for Oklahoma

County citizens who do not have a medical home and often seek medical care in the hospital emergency rooms or free clinics. The concept began with Dr. R. Murali Krishna, 2005 OCMS President, who had the vision of developing a coordinated healthcare delivery system for the uninsured in Oklahoma County. HAU serves over 10,000 patients every year through 20 free clinics. Approximately 250 physicians volunteer their services. Physician volunteerism has improved several fold after successful passage of the OCMS advocated Senate Bill 930 that protects physician volunteers from malpractice litigation.

Oklahoma Blood Institute

In 1972, OCMS leadership began a study of the local blood banking problems. After several years of planning, financing was secured by physicians and the Oklahoma Blood Institute was formed. It is now recognized as a national leader in blood banking and was the first in the U.S. to offer free cholesterol testing as a benefit to donors. In addition to providing the safest possible

blood and blood components to patients, OBI offers many medical services and is involved in a variety of research projects, particularly in hematology and blood component therapy.

Amcare/EMSA

In 1975, OCMS began publicizing the need for a community emergency transport system. Over a period of many years, working in conjunction with the Mayor's Task Force, AM CARE (now EMSA) started without the assistance of government funding. OCMS committed \$19,000 in financial support and provided physicians who served as members of the professional advisory group.

Hospice of Oklahoma County

In 1990, OCMS leadership recognized the need for a local non-profit hospice and established Hospice of Oklahoma County. It was the only hospice in the U.S. organized and funded by physicians. This hospice is now named INTEGRIS Hospice of Oklahoma County.

Healthy Schools Oklahoma

Due to concerns addressed by the OCMS Community Health Committee, the Schools for Healthy Lifestyles (SHL) program was started in 1996, with the Oklahoma City-County Health Department and the Oklahoma State Department of Health as partners. This community-based health promotion program concentrates on education in the areas of injury prevention, nutrition, physical fitness and tobacco use prevention.

OCMS physicians are encouraged to participate in this program by becoming an "Adopt-A-Doc" for an SHL school.

ITN Central Oklahoma

The most recent community project for the Oklahoma County Medical Society is helping to bring a new kind of transportation service to Oklahoma County senior citizens and the visually impaired. ITN Central Oklahoma will provide transportation 24/7 anywhere within the service area in private cars driven by screened and trained volunteer drivers. With ITN Central Oklahoma, seniors and the visually impaired can lead active, independent lives and continue to participate in their community without feeling like a burden on friends and family and without endangering others around them.

OCMS continues to innovate and adapt and to provide unmet needs. Your medical society advocates on your behalf at the local level like no other organization can. It allows networking opportunities with colleagues from different specialties and different hospital affiliations. It also serves as a vehicle for starting healthcare-related philanthropic organizations. As we begin this new year, I am grateful for the leadership provided by prior OCMS physicians who have set a high bar for volunteerism and humanitarianism. I hope that we can deepen our relationship with the nonprofits that OCMS has already spawned and, perhaps, create and nurture new philanthropic organizations focused on improving healthcare in our community.



John P. Zubialde, MD
Dean's Page

JOHN P. ZUBIALDE, MD
EXECUTIVE DEAN AND PROFESSOR,
FAMILY AND PREVENTIVE MEDICINE
UNIVERSITY OF OKLAHOMA
COLLEGE OF MEDICINE

As you have heard me articulate in several of my previous Dean's Pages, high-impact research is key to transforming the health of Oklahomans. Today, that type of research requires highly collaborative ventures between important federal, academic and community partners. This month, I'd like to highlight just one such successful collaboration. Vision research at the OU College of Medicine and Dean McGee Eye Institute, the home base of the Department of Ophthalmology, is not only one of the most highly funded research programs on the OU Health Sciences Center campus, but also one of the most multidisciplinary.

The ongoing success of the College of Medicine's vision research program can be seen in the recent renewal of the P30 Vision Core grant, which was originally awarded a decade ago. Since that time, vision research has flourished, with more than 20 research laboratories now focusing on eye diseases, multidisciplinary collaborations increasing between vision and non-vision investigators, and new researchers recruited and launching their careers. These days, it truly takes a village to conduct clinically and translationally relevant analysis of eye structure, function, and disease.

The renewal of the P30 grant — a five-year, \$2.9 million award — will allow us to expand the "cores" of specialized equipment available to vision researchers

across campus and at the neighboring Oklahoma Medical Research Foundation. These cores contain sophisticated and expensive technology that individual researchers would not be able to acquire on their own. Because the cores are used by researchers in various disciplines, they facilitate the multidisciplinary collaborations that have become so important — between, for example, researchers in physiology, pathology, cell biology, microbiology and immunology, pharmaceutical sciences, ophthalmology and other areas.

The grant renewal will help fund four cores, one new and three existing. The first will be a new core in Ocular Immunobiology. Immunobiology, as we have learned, is at the crux of nearly every condition, and there is an immune-related slant to every research model, even those that don't overtly include inflammation. The centerpiece of the Ocular Immunobiology Core is a highly technical piece of equipment known as a high-end flow cytometer that will greatly increase the types of analysis our researchers can do from an immune standpoint.

Existing cores also will be enhanced through this grant. The Model Imaging Core allows researchers to analyze visual function and other physiological functions of eye disease models. It also includes an emphasis on genotyping to ensure the genetic

consistency of research models. The Cellular Imaging Core helps researchers visualize physiological processes at the cellular and subcellular levels and is critical for producing high-quality figures for publication. The Administrative Support Core provides support across each of the others.

The continued renewal of the P30 grant has been possible because most of our individual researchers hold R01 grants from the National Eye Institute, considered the gold standard in vision research funding. In Department of Ophthalmology alone, every researcher is funded at some level by intramural and/or extramural funding. Most have one or more grants from the National Eye Institute, which, in addition to R01s, include the K99/R00 Pathway to Independence Awards and R21 Exploratory/Developmental Research Grant Awards.

Individual research projects are too numerous to mention, but a few examples include those of our core directors. Darren Lee, Ph.D., investigates autoimmune uveitis, an inflammation of the eye that is the third-

leading cause of blindness in the United States.

Michael Elliott, Ph.D., focuses on cellular membranes and how they control cellular signaling in vision, and Raju Rajala, Ph.D., investigates neurodegenerative diseases of the retina. Michelle Callegan, Ph.D., who serves as Director of Vision Research at Dean McGee Eye Institute and a George Lynn Cross Research Professor in the Departments of Ophthalmology and Microbiology and Immunology, leads the P30 grant and recently received a new R01 grant of her own to study *Staphylococcus aureus* infections of the eye.

As successful as vision research is on our campus, it is poised to grow even further. The college holds a T32 Vision Sciences training grant from the National Eye Institute, which supports pre- and postdoctoral trainees. New faculty recruits also continue to arrive, bringing innovative and significant research projects. Together, we are envisioning a future of discoveries that will improve and restore eyesight for Oklahomans, Americans and beyond.

"You can't fight what you don't know about. If you know about it, you can fight it. You can beat it. You can survive."

- Cecilia, Breast Health Network Patient and Breast Cancer Survivor

It's not just about **pink**. It's about your health.

The solution is clear – mammograms save lives. And Breast Health Network has the latest technology to find cancer at the earliest stage.

Schedule your mammogram today.

Breast Health Network has four metro locations and Saturday appointments.





Amy Hall
Vice President
Commercial/Private Banking
ahall@nbcok.com
405.748.9187

Healthcare Banking

Uncompromising service backed by the best bankers in the business. Providing financial products and services to meet the needs of healthcare professionals.

For 90 years we've been building exceptional relationships with one goal in mind – yours.

Sheila Heim
Senior Vice President
Commercial/Private Banking
sheim@nbcok.com
405.748.9133



nbc.bank



Member FDIC

The Nanda Family -- (standing) Arjun Nanda, Sumeeta Nanda, MD, and Sumit K. Nanda, MD (seated) Aria Nanda, Asha Nanda



CONGRATULATIONS TO
SUMIT K. NANDA, MD,
WHO WILL SOON BE INAUGURATED AS
THE 122ND PRESIDENT OF
THE OKLAHOMA COUNTY
MEDICAL SOCIETY

About the Cover

Dr. Nanda is an ophthalmologist and retinal specialist in private practice in Oklahoma City. He grew up in Norman and trained at Duke and Johns Hopkins. He served on the faculty at the University of Oklahoma Department of Ophthalmology/Dean McGee Eye Institute for 9 years prior to starting his own private retina practice at INTEGRIS Baptist Medical Center. He has served in leadership positions at the Dean McGee Eye Institute, the Oklahoma Academy of Ophthalmology, and the INTEGRIS Baptist Medical Center. He has served on the OCMS board since 2019. In February, Dr. Nanda is slated to be installed during the OCMS Presidential Inaugural and Celebration at the Oklahoma City Golf & Country Club.

Dr. Nanda has been a strong advocate for all physicians in our state, large practice or small practice, academic or private, urban or rural. He has strongly supported public health measures including vaccinations.

PART 2: Screening Older Physicians for Physical and Cognitive Impairment – Hospital Lawsuit

S. SANDY SANBAR, MD, PhD, JD, FCLM*

Editor's Note: this is Part 2 of a four-part series.

Part 1 Screening Older Physicians for Physical and Cognitive Impairment -- Assessment

Part 2 Lawsuits Pertaining to Age Discrimination of Older Physicians

Part 3 Federal and State Law on the Subject **Part 4** Review of Court Decisions

Yale New Haven Hospital

In 2016, Yale New Haven Hospital in New Haven, Connecticut, commenced its “Late Career Practitioner Policy” which mandated that any individual 70 and over must take both ophthalmologic and neuropsychological examinations in order to apply for or renew medical staff privileges at the hospital. The policy involved a multiple step assessment of physicians age 70 and older who apply for, or seek renewal of medical staff privileges. The physicians are required to undergo multiple tests to evaluate cognitive ability by a neuropsychologist.¹ The tests include:

- Rudimentary information processing;
- Visual scanning and psychomotor efficiency;
- Processing speed and accuracy under decision pressure;
- Concentration and working memory;
- Visual analysis and reasoning;
- Verbal fluency;
- Memory both visual and verbal;
- Prefrontal self-regulation; and
- Executive functioning.

The original plan at Yale was to perform neurologic and ophthalmologic examinations beginning at age 70, but ultimately it was decided to go with a battery of 16 tests. Testing took about 50-90 minutes. It was graded by a single neuropsychologist to ensure consistency. The test results were compared with normative scores from both older and younger clinicians.² Final assessment of the results of the cognitive tests were reviewed by the Hospital’s Medical Staff

Review Committee that provided its recommendations to the medical staff credentialing panel.

Since 2016, the Yale Hospital has assessed older physicians, dentists, psychologists, physician assistants, midwives, podiatrists, and Advanced Practice Registered Nurses.

The mean age among the 141 screened clinicians was 74.3 years and ranged from 69 to 92 years; 86% were men. The applicants included 125 physicians (88.7%), 5 advanced practice registered nurses; 4 dentists; 3 psychologists; 2 podiatrists; 1 physician associate; and 1 midwife.

After conducting more than 1,800 competency assessments, it became clear that certain risk factors, including health problems and cognitive decline, were associated with the physicians involved in disciplinary proceedings

Minor abnormalities were found in 34 other candidates (24.1%); they were allowed to recredential but were scheduled for rescreening at 1-year intervals, instead of every 2 years.

Cognitive screening of 141 clinicians who were 70 years or older at Yale New Haven Hospital identified 18 with cognitive deficits likely to impair their ability to practice medicine; 5 were 70-74 years old; 4 were 75-79; and 9 were 80 years or older.

With respect to clinical performance, none of the 18 clinicians at Yale had previous performance problems.

Six retired and 12 agreed to limit their practice to closely proctored environments.³

Dr. Irwin Nash

In 2018, Dr. Irwin Nash was 73 years of age. For 42 continuous years, he had worked as a pathologist at Yale New Haven Hospital, in Connecticut, and he also

served on the medical school faculty. He was required to complete cognitive and eye exams to maintain hospital privileges after age 70.

He underwent the examinations and passed. Subsequently, he filed a complaint with the Equal Employment Opportunity Commission (EEOC) against the Yale New Haven Hospital, which is the primary teaching hospital affiliated with Yale School of Medicine. He complained to the EEOC.

On February 11, 2020, the EEOC sued Yale New Haven Hospital (Hospital)⁴ alleging violation of:

1. The Age Discrimination in Employment Act (ADEA)⁵,
2. The Americans with Disabilities Act (ADA)⁶, and
3. Title I of the Civil Rights Act of 1991⁷, by adopting and implementing a “Late Career Practitioner Policy” in 2016.⁸

The EEOC charged the Hospital with violating the law and alleged that the screening requirements subjected Dr. Nash and others “to the stigma of being singled out because of their age.” The EEOC sought a permanent injunction enjoining the Hospital from engaging in any age-based discriminatory employment practice. The injunction is against the Hospital’s Policy, instatement, reinstatement, front pay, back wages, liquidated damages, punitive damages, and costs.⁹ As of December 9, 2021, the case of EEOC v. Yale New Haven Hospital had not been decided.

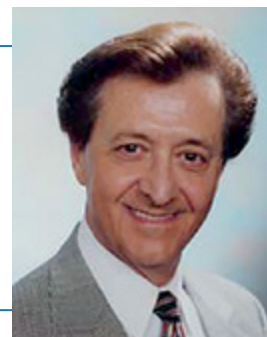
The EEOC contends that:

- The medical examinations are solely due to the physician’s age with no particularized suspicion that the physician’s eyesight or neuropsychological ability may have declined.

Continues on page 16 ...

Law and Medicine

*Dr. Sanbar is an Adjunct Professor of Medical Education, University of Oklahoma Health Sciences Center; Executive Director and Past Chairman and Diplomat, American Board of Legal Medicine; and Past President and Fellow, American College of Legal Medicine. He is a health law attorney and a retired cardiologist.



- The Hospital Policy violates the Age Discrimination in Employment Act (ADEA). It “subjects (physician) employees to the stigma of being singled out due to their age.” As a consequence, this has the “effect of depriving medical providers age 70 and older from equal employment opportunities.”
- The ophthalmologic and neuropsychological exams are medical examinations. They violate the Americans with Disabilities Act’s (ADA) prohibition against subjecting employees to medical examinations that are not job-related and consistent with business necessity.
- The medical examination interferes with the clinician’s right to enjoy their employment free from unlawful medical examinations.

On May 13, 2020, the Hospital responded to the EEOC’s allegations as follows:

- It denied the existence of any employment relationship between the Hospital and any physician whose association with the Hospital is merely by virtue of holding or exercising medical staff privileges.
- It asserted that without proving an employment relationship between the parties, the provisions of the ADEA and ADA at issue would not apply.
- And, even if an employment relationship existed between the Hospital and any of the aggrieved parties, the Hospital’s medical staff developed and implemented the Policy, and not the Hospital.
- Hence, the provisions of the ADEA and ADA do not apply.

Peer Review Privilege

In early June, 2021, the EEOC sought to compel release of testing peer review information from Yale New Haven Hospital. The hospital argued that the documents were protected by a litigation privilege.

In late June 2021, Federal Judge Vanessa L. Bryant of the District of Connecticut ruled that Yale New

Haven Hospital Inc. must turn over to the EEOC peer review and credential files for 115 practitioners in the suit alleging bias in a policy of requiring doctors age 70 or older to submit to certain testing requirements. The Judge acknowledged that a “peer review privilege is widely recognized in state courts.” But the EEOC is suing under the ADEA and the ADA, hence federal common law controls. And no federal privilege protects the documents the agency seeks from disclosure. Furthermore, Yale New Haven failed to show in February 2020 that the court should exercise its discretion to recognize a peer-review privilege.

In Sum

Yale New Haven Hospital is well-intentioned but appears to have a difficult legal hurdle to cross. Even if the Hospital prevails, the EEOC will probably appeal the case clear up to the Supreme Court. Over the past two decades, a number of hospitals and medical organizations have been developing policies aimed at mandatory screening of older physicians and other health care workers. The EEOC has warned that it may pursue similar complaints and litigation against such age discrimination policies as it did in the case of Yale New Haven Hospital.

Part 3 of this article will review federal and state law governing age discrimination, and Part 4 will present court decision on mandatory screening of older employees.

¹Leo Cooney, M.D., Thomas Balcezak, M.D., et al. Cognitive Testing of Older Clinicians Prior to Recredentialing, *Journal of the American Medical Association*, January 14, 2020, <https://jamanetwork.com/journals/jama/article-abstract/2758602>

²Cooney L et al. *JAMA*. 2020 Jan 14;323(2):179-80

³<https://www.mdedge.com/internalmedicine/article/215751/business-medicine/cognitive-screening-older-physicians-whats-fair>

⁴<https://www.wtnh.com/wp-content/uploads/sites/100/2020/02/yale-new-haven-hospital-eeoc-lawsuit.pdf>

⁵29 U.S.C. § 621 et. seq.

⁶42 U.S.C. §12101, et. seq.

⁷42 U.S.C. §1981a

⁸EEOC v. Yale New Haven Hospital Inc., D. Conn., No. 3:20-cv-00187

⁹<https://www.natlawreview.com/article/eeoc-challenges-yale-new-haven-s-late-career-practitioner-policy-discrimination-suit>



Accepting New Patients!

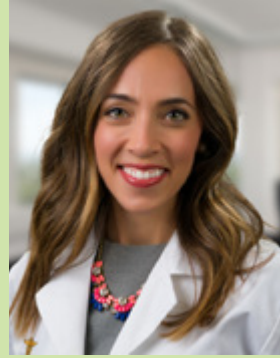
Follow us on Twitter @okallergyasthma
and like us on Facebook for daily allergy reports
@oklahomaallergyasthmaclinic on Instagram



Dr. Dean Atkinson



Dr. Laura Chong



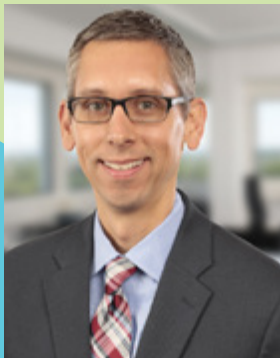
Dr. Maya Gharfeh



Dr. Richard Hatch



Dr. Bret Haymore



Dr. Gregory Metz



Dr. Patricia
Overhulser



Dr. Shahan Stutes



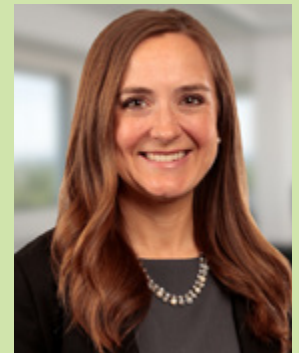
Karen Gregory,
DNP



Chelsea Robinson,
APRN, CNP



Stefanie Rollins,
APRN, CNP, AE-C



Elisa Thompson,
APRN, CNP

Main Office

at the Oklahoma Health Center
750 N.E. 13th

Edmond at Fisher Hall

3560 S. Boulevard, Suite 150

Midwest City

8121 National Avenue

Yukon

1601 Health Center Parkway, Building 1200

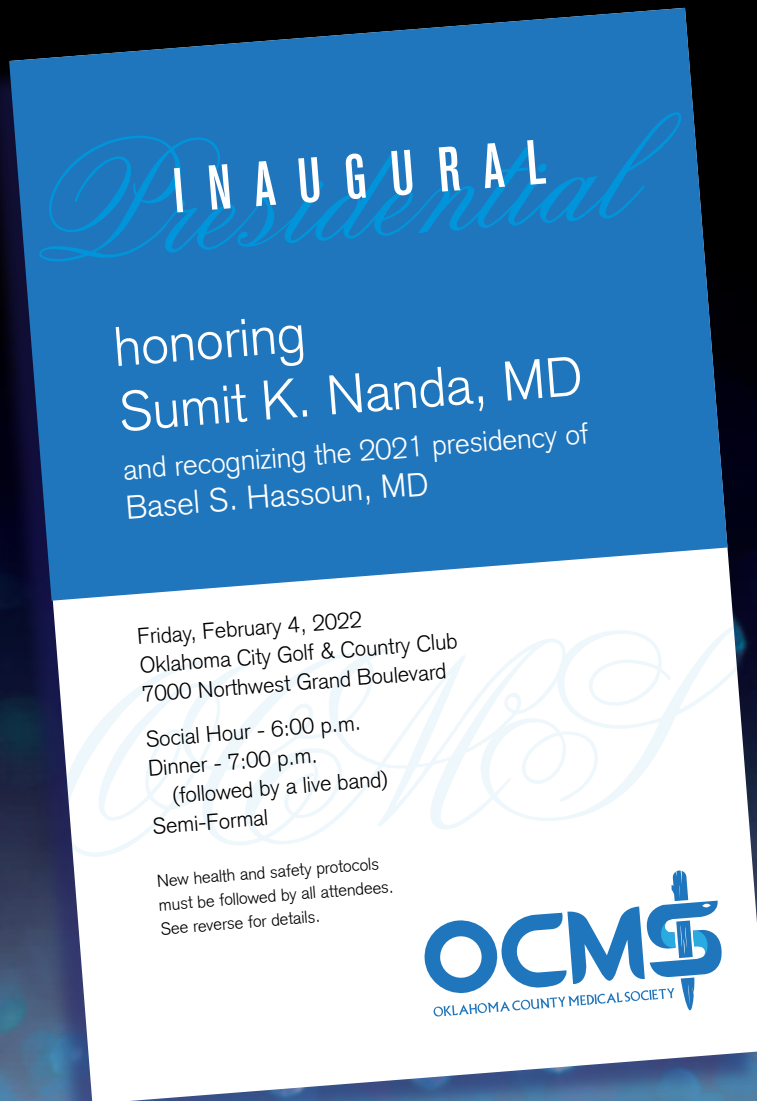
Norman

Healthplex Parkway in Medical Park West

3580 R.C. Luttrell Drive

Appointments 405/235-0040 • www.oklahomaallergy.com

PRESIDENTIAL INAUGURATION AND CELEBRATION



okcountymed.org





Watson Selected For 2021 OCMS Rhinehart Award

The Oklahoma County Medical Society is pleased to recognize Julie Watson, MD, MPH, as the Rhinehart Award recipient. The Rhinehart Award is presented to an OCMS member, active or retired, who has demonstrated significant involvement in projects to help health care, the community, or the state. The award was named for Don F. Rhinehart, MD, an outstanding OCMS physician who was dedicated to the community.

Dr. Watson currently serves as Senior Vice President and Chief Medical Officer for INTEGRIS Health. Previously, she served as Chief Medical Officer of INTEGRIS Baptist Medical Center from 2018-2020 and Vice President of Medical Affairs for the system from 2019-2020. She began her leadership career at INTEGRIS Baptist Medical Center in 2012, serving as the Department Chair of Pediatrics for six years.

A native of Oklahoma, Dr. Watson completed her undergraduate degree at OU and her Medical Degree from the University of Oklahoma College of Medicine. She completed her pediatric residency at Rush University Medical Center in Chicago and her neonatal-perinatal fellowship at Northwestern Feinberg School of Medicine in Chicago. She also holds a master's degree in Public Health from the University of Illinois – Chicago with an emphasis

in Health Policy. Following training, she returned to Oklahoma City in 2008 to begin her neonatology career in the NICU at INTEGRIS Baptist Medical Center as a board certified neonatologist. In 2018, she completed a certificate program in Fundamentals of Value Based Health Care through Dartmouth Institute.

Dr. Watson is a relationship and results-oriented physician leader who is passionate about co-creating shared purpose and vision, developing effective teams and talents and engaging others in improving outcomes that matter to patients, caregivers and communities. Her mission centers on helping providers see possibilities, leveraging existing and growing new relationships, leading culture change and using innovative operating models to achieve results.

She believes great leadership is evidenced by the success of those they lead. She could not be more proud of her clinical leader colleagues and all they accomplished and weathered over the last two years. She is also eternally grateful to her family for their sacrifices and support during this time. She will be forever in their debt.

Dr. Watson will be recognized at the OCMS Presidential Inaugural and Celebration on February 4 at the Oklahoma City Golf and Country Club. Tickets are available at www.okcountymed.org/inaugural.

Alison Fink

DIRECTOR'S DIALOGUE



If you have ever met me, you know I have a penchant for OU football and November is one of my favorite months of the year. It is a beautiful symphony of upsets and wins that change the landscape of college football playoffs. This year, Bedlam was the huge game, but even if 'my' team won or lost, I was confident in our dedicated coaching staff and five-star recruits!

The only thing that is constant is change. – Heraclitus

I hate to quote a sometimes-depressive, pessimistic, contrarian philosopher, but maybe he was onto something. In just a week, the Oklahoma Sooners lost an important game along with a head coach and a lot of those five-star recruits. Angry OU fans abounded through the social media proclaiming everything from a Big XII conspiracy to a subtle coaching termination. OU fans were so terrified of a losing season that Bob Stoops had to reissue confidence to fans that the program was in a much better place than when he arrived in 1998. A different program ready to take on the new challenge.

No man ever steps in the same river twice, for it's not the same river and he's not the same man. – Heraclitus

OCMS leadership recently confirmed our Presidential Inaugural and Celebration on February 4, 2022, our first in-person event since January 2020. Within days, the Omicron variant popped up in the US. Now, the variant is being detected in more and

more states and is beginning to emerge as a primary variant. We have seen this water before. We are more prepared. This crossing has some of the same challenges but we're taking a different approach while we proceed.

OCMS leadership opted to require vaccinations at this event. We will encourage mask-wearing to ensure that for the first time in two years, our members can meet in person. Perhaps celebrate some small accomplishments over two years. Recognize not one, but two OCMS Presidents and two recipients of the prestigious Don F. Rhinehart Community Service Award. Perhaps the event will be a small reminder that together, as an organization, our members are still focused on the mission of being the leading advocate to improve the health of our citizens and nurture and enhance the well-being of our physicians.

The sun is new each day. – Heraclitus

After two years, members tell me they want to meet. To see each other. A celebration of what they have accomplished and overcome in the wildest two years thus far of their careers. We are living in an ever-changing world that holds nothing back when it comes to change. New football coaches, new water, new event strategies. We cannot predict 2022, but OCMS will continue to work in the best interests of its members. Tickets for the 2022 Inaugural can be purchased online at okcountymed.org/inaugural.



You've dreamed about it long enough.

Our Healthcare Banking Division has a Physician
Home Mortgage with *up to 100% Financing.*

Available to both physicians & medical residents.



Michael Levine, Senior Vice President
Healthcare Banking Division Manager
405-608-1048 • mlevine@myfirstliberty.com
NMLS #1125959



Jamie Vafadar, Vice President
Healthcare Banking Relationship Manager
405-608-0689 • jvafadar@myfirstliberty.com
NMLS #799925



Bank NMLS#1215182



FIRSTLIBERTY
HEALTHCARE BANKING

9601 N. May Avenue, OKC 73120



Being married to medicine,
Alliance members share a bond like no other.



Join the Oklahoma County Medical Society Alliance.

We celebrate the joys and understand the demands of the profession. Such similarities encourage valuable networking, heartfelt mentoring and lifelong friendships among members. We support each other while we work together to promote health and wellness in our community.

Our Purpose

- We enrich our community through awareness and education about health and wellness.
- We assist non-profit organizations that meet health-related needs in Oklahoma County.
- We partner with physicians to advocate positive legislative changes on behalf of the medical profession.
- We build a dynamic network for communication and support among physician families.

Our Benefits

- Community service with coordinated group volunteering activities
- Fundraising for non-profit health services, through the annual Kitchen Tour
- Enriching and educational programming at monthly luncheons
- Friendships and organized social gatherings (Book Club, anyone?)

Learn more and join online

www.ocmsalliance.org

Contact us and attend our next meeting

membership@ocmsalliance.org



PEOPLE YOU KNOW.

COVERAGE YOU CAN TRUST.

Choose your health coverage from people who share your idea of what it means to truly, passionately want to make a difference.



OSMA HEALTH is a health benefits program created by physicians and available exclusively to members of the Oklahoma State Medical Association, their employees and their families.

At OSMAHealth, we believe in the power of a shared vision. We are built and governed by physicians; looking toward the future with the same focus and same intention that, like you, seeks to make a difference.



Contact us today for more details: **405.290.5666** Toll-Free **888.244.5096**

ESSENTIAL PPO | ADVANTAGE PPO | HDHP for HSAs | RETIRE 65+ PLAN | DENTAL PLAN



Hospice • Hospice House • Palliative Care

It's not about giving up hope, but about
living each day to the fullest.



Call 405-848-8884

integrishospice.com

IN MEMORIAM

DR. RICHARD HESS

RICHARD JACOB (DICK) HESS WAS BORN AUGUST 18, 1937, IN PEN ARGYL, PENNSYLVANIA, and grew up in neighboring Bangor, a town of 6,000 people nestled in the base of the Allegheny Mountains, not far from the Delaware Water Gap. The only child of Gwendolyn and Ralph Hess, Dick had an idyllic childhood: playing every sport he could, trout and bass fishing with his father, and hiking in the nearby mountains with his fellow Boy Scouts. He first saw the love of his life, Barbara Henning, when he was twelve, but did not work up the courage to talk to her until they had a class together in the eleventh grade. They married in 1959 and have been best friends and lovers ever since. Dick had a tremendous love for sports. He played quarterback for the Bangor High School football team and after his senior season he was named to the All-Conference team and 2nd Honorable Mention to the All-State team. He retained a love for football his entire life.

After high school, he attended Muhlenberg College in Allentown, Pennsylvania, where he was a member of the Alpha Tau Omega Fraternity and experienced a wonderful and eventful four years. He then attended Temple University Medical School in Philadelphia, Pennsylvania, where he was a member of the Alpha Omega Alpha Honor Society and graduated with highest honors, finishing in the top five in his class of over 100 students. After graduating from Temple in June 1963 he joined the Army to continue his medical training. First at Madigan General Hospital in Tacoma, Washington then to William Beaumont Hospital in El Paso, Texas. An overseas deployment followed. His final assignment was to Fort Dix, New Jersey. He returned to Philadelphia and completed a fellowship in Rheumatology at Temple University Hospital. He served honorably in the United States Army Medical Corps for seven years and, from 1967 to 1968, he served as the chief medical officer of a Medical Army Surgical Hospital Unit (MASH) in both Korea and Vietnam. He loved his experience in the military and held deep pride for his service and the service of his fellow soldiers. He was awarded the Army Commendation Medal, the National Defense Service Medal, the Korea Defense Service Medal, and the Vietnam Service



Medal with one bronze service star. Major Hess retired from the Army in 1970.

Following the completion of his military service, he and his family settled in Oklahoma City, where he would reside for the rest of his life. He worked at the McBride Clinic for 31 years before retiring in 2001. Quickly finding retirement entirely too unstimulating, he practiced as a locum tenens physician at an occupational medicine clinic until 2019. He was active in the Arthritis Foundation, serving as president for three years and on the board of directors for twenty years. He was a member of the American Medical Association and a fellow of the American College of Physicians and the American College of Rheumatology. He was a man of science with a strong passion for learning. His greatest pursuit in life was applying his knowledge to heal his patients. A lifelong student, he looked forward to his annual continuing medical education coursework and maintained his license to practice medicine until the day he died.

He had an undying love for his wife of 62 years, Barbara, and their daughters, Beth Graves and her husband Cody, Jo Ann Schlegel and her husband Mark, and Carol Moffer and husband Kent. His six grandchildren, Ben Graves and his wife Caitlin; Kevin Schlegel and Becca Ogden; Matt Graves and his wife Elizabeth; Debra Schlegel Sartin and her husband Mike; Will Graves and his wife Julie; and Megan Moffer, proved to be extraordinarily special to him. He reveled in

their presence and could not get enough of their accomplishments. His most treasured memories were watching them play sports, perform at dance recitals, and summer afternoons spent swimming in his pool. He was so proud to see them all grow up to be wonderful, kind adults. He was especially glad to meet two of his great-grandchildren, Eloise and Henry Graves.

He was a man of many interests. He loved to travel the world in search of cozy yet elegant restaurants, to drink wine and toast with champagne, and to meet fascinating people, usually finding the most fascinating ones in pubs. He loved reading, flyfishing, college football, the United States Army, Muhlenberg College, and Temple Medical School. His greatest interest was the American Civil War. He devoted countless hours to study and devoured countless books on every aspect of the war. For many years his most anticipated travel was his annual summer trip to the Civil War Institute in Gettysburg, often referring to it as his "grown-up summer camp." He cherished the people he met and the friendships he developed there. He loved to visit battle sites, particularly forts from the French and Indian War. His greatest hobby was golf. He and Barbara were long time members of The Greens and then Oak Tree Country Club and made many friends there. In his home office he kept a map of the United States with a pin marking each course he and Barbara played across the country and he was proud to say they played in all fifty states. His most treasured golf experiences were playing at Royal Dornoch and Machrihanish in Scotland. He loved golf, golf clothes, golf clubs, golf courses, golf architecture, but to his great dismay was never able to play the game as well as he had always wished.

A prayer service was held at Smith and Kernke, 14624 North May Ave., Oklahoma City, at 5 p.m. on December 5. Mass of Christian Burial was celebrated at Christ the King Catholic Church, 8005 Dorset Drive, Nichols Hills, at 10:30 a.m. on December 6. A private inurnment was held at Resurrection Cemetery in Oklahoma City later. In lieu of flowers, Dick's family requests that donations be made to the American Macular Degeneration Foundation or the Oklahoma Medical Research Foundation for arthritis research.

IN MEMORIAM

MARVIN DALE PEYTON, MD

January 12, 1946 – August 7, 2021

Dr. Marvin Dale Peyton, beloved husband, father, grandfather, brother, uncle, and distinguished thoracic and cardiovascular surgeon, passed away peacefully on August 7, 2021, at his home in Oklahoma City. Marvin was born on January 12, 1946, in Cushing Oklahoma to Sim Hondoras Peyton and Ruby Geneva (Laughlin) Peyton. He graduated from Cushing High School, received his undergraduate degree from Oklahoma State University and his medical degree from the University of Oklahoma School of Medicine.



Dr. Peyton provided care to the Oklahoma City community as a thoracic and cardiovascular surgeon for thirty years. In 2002 he returned to academic medicine as the Chairman of the Section of Thoracic and Cardiovascular Surgery and Professor of surgery. In 2015 he was named Professor Emeritus of Surgery by the Board of Regents of the University of Oklahoma.

Dr. Peyton will be remembered fondly for his calm and caring ways, his humility, his dry sense of humor, and his kindness. He was an avid reader, an active skier and runner, a hunter, a fisherman, and so-so golf player. He enjoyed spending time with friends and family, lake time, and enthusiastically embraced the cowboy life with his horses. He was proud of his Oklahoma heritage. We will miss his brilliance, stubbornness, frugality, ability to fall asleep anywhere, passion for old-fashioned values, his numerous hand-written notes to friends and family, and genuine curiosity and love for learning.

He is survived by Sandra, his loving wife of fifty-five years; his children Marvin Lane Peyton, M.D., Tyler Fox Peyton, and Laura Jane Peyton; his grandchildren Carter Fox Peyton and Clara Lane Peyton; his sister Leta Faye (Peyton) McLemore; his sister-in-law Susan Fox Creekmore and her husband Joe; his nephew Brent McLemore, and nieces Sharon Probasco Peery, Chrystal Probasco, Carole McLemore, Sheila (McLemore) McCarty and husband Mike, Taylor Jacobs and husband Marc; and many great nieces and nephews. He is preceded in death by his parents and sisters Juanita (Peyton) Probasco, and Treva Mae Peyton.

May he rest with quiet dignity.

Services were held at St. Luke's United Methodist Church on August 14.

In lieu of flowers, donations may be made to the University of Oklahoma College of Medicine, 800 Stanton L. Young Boulevard, Oklahoma City, OK 73117.

MEMORIAL MASS

In Remembrance of

DR. JOHNNY B. ROY



**JANUARY 21, 2022
10:00 AM**

**CHRIST THE KING
CATHOLIC CHURCH**

**8005 Dorset Drive
Nichols Hills, OK**



2022 Doctor of the Day Program

As part of our ongoing legislative relations, the Oklahoma State Medical Association manages the Oklahoma State Capitol's Doctor of the Day program. This program offers a great opportunity for our members to meet their state legislators and discuss with them the issues that matter to the "House of Medicine."

Each Doctor of the Day is at the Capitol for the day to handle minor medical situations (think aspirin and Band-Aids). But more importantly, participants can serve as the face of OSMA and visit with elected officials about the impact their votes have on Oklahomans' health.

Oklahoma County Medical Society is responsible for the month of February during session. Dates fill up quickly. All dates in February are currently available. Visit <https://www.okcountymed.org/doctoroftheday/> to reserve your preferred date.

Due to the current COVID-19 pandemic, the future of the program is uncertain. OCMS encourages you to reserve a date. We will keep you informed, and your reserved date saved until we know more information.

More questions? Contact Matt Robison at 405-601-9571 or robison@okmed.org.



Under The Covers

By Hanna A. Saadah, MD

Oklahoma City, 1998

"Genevieve, what a musical name," I smiled. "Were your forefathers French?"

"Oh, no, Doctor," she half laughed. "My father was born in St. Genevieve, Missouri, and named me, his first born, after his town. He was so fond of that little French town and told us repeatedly that St. Genevieve, the Patron Saint of Paris—who saved Paris from Attila the Hun in the fifth century—is also his little town's patron saint because she protected it from the Great Flood of 1785."

"Was that really true?"

"Of course not," she laughed. "The town had to be moved from its initial location on the flood-plain. But fathers do embellish when they tell stories to their little girls," she giggled excitedly as if tickled by that memory.



This happy conversation took place many years ago when Genevieve Lorem came in as a new patient. She was in her fifties, elegant, articulate, lithe, brimming with quips, and full of laughter.

"How may I help you, Mrs. Lorem?" I began.

"It's a bit embarrassing, Doctor," she blushed with chin quivering and eyes at the edge of tears, "but I've gotten too dry and my dear husband hates it."

"Do you want hormones?"

"No, they cause cancer."

"Have you tried lubricants?"

"My husband hates them too. Oh, I can't believe I'm telling you all this," she sniffled and gracefully dabbed her nose with a silk handkerchief.

"Well, how about hormone creams? They don't cause cancer."

"Richard abhors all creams. Oh, how embarrassing," she whispered.

"Do you have anything particular in mind?" I whispered back, as if sharing her intimate secret.

"After you examine me, I wish you would talk to Richard. He's been coming to you for several years now and would listen to what you say."

"What would you like me to tell him?" I asked, trying to hide my discomfort.

"I don't know, Doctor. Check his hormones; they have to be abnormal. Try to insinuate that I'm too old and too dry to have sex every night," she blushed again.

"Every night?" I gasped.

"He wants it every night, Doctor, every night, every darn night. To him it's love and to me it's agony. We started at nineteen and he has never stopped," she whimpered. "Don't get me wrong, Doctor. He's a very good man and I love him dearly, but..." she wiped off a tear with her long, manicured fingers and did not finish her sentence.



I could not help Mrs. Lorem and I did not dare broach the topic with Mr. Lorem, who was a reserved man, leaving the matter for time to untangle. "*O time, thou must untangle this, not I, It is too hard a knot for me to untie*," said Shakespeare in Twelfth Night, and that four-hundred-year-old quotation was all I needed to support my inaction.

Nevertheless, they both continued to come for their annual examinations, but instead of coming together, as was their habit, they started coming separately. The years ambled and times tumbled, but Mrs. Lorem's chief complaint remained the same. And as the years grew, so grew the shedding of her quiet tears, which

Continues on page 30 ...



she wiped off most elegantly, holding her silken handkerchief with long, manicured fingers.

In her sixties, Mrs. Lorem began to lose her figure to menopausal girth, which rendered her rotund and buxom but, in spite of the menace of years, she managed to maintain an elegant, cheerful aspect.

In her seventies, she began to look tired and elegance started to migrate away. Her intriguing expressions became replaced by a cliché-wondering look; her liquid, graceful body movements gave way to un-choreographed automatisms; and her aristocratic demeanor faded into a resigned, charmless comport. She sighed more than she laughed, muttered more than she quipped, and her primal cheerfulness slowly stooped under the heft of marital years.



“He’s wearing me out, Doctor. He doesn’t know how to show love except under the covers. We hardly hold hands anymore, but each night he holds me with his powerful arms and only lets go when he falls asleep. If sex could kill, I should have died 20,075 times.”

“How on earth did you arrive at that strange figure?”

“We married at 19 and now I’m 74. Do the math, Doctor. Multiply 365 x 55 and you’ll get 20,075 times. Can you believe that?”

“This is most unusual,” I confessed, half believing her numerical exaggeration.

“It’s true, Doctor. I’m not exaggerating,” she insisted, having discerned my skepticism.

“*You never really understand a person until you consider things from his point of view—until you climb into his skin and walk around in it,*” said Harper Lee in *To Kill a Mockingbird*. I wonder what mind set, what life view, what existential ethos possesses your husband to make him behave the way he does?”

“‘Sarah couldn’t get pregnant till she was 90, Genesis 21:2,’ he keeps saying. What a pathetic excuse. I think he’s a sex maniac.”

“Perhaps he really believes that you can still bring forth an Isaac into his Abraham world.”

“No, Doctor. He’s not possessed by such lofty beliefs. He’s just a sex maniac and I hate him for it. It was fun when we were young, but at our age, it’s sick. Sick, sick, and more sick—there’s no other name for it,” she sobbed, almost convulsing. “But I love him and suffer every night because I don’t have the heart to reject him.”

For the first time since I began seeing Mrs. Lorem, anger gushed from her eyes, puckering her once beautiful face. Her tears fumed down her red-hot cheeks and fell, un-wiped, onto her lap. Her gnarled, un-manicured fingers no longer reached to blot her salty tears with a silken handkerchief. Instead, when she was through crying, she nonchalantly wiped her cheeks with her bare palms.



A few months later Mr. Lorem came in for his annual examination, looking well. Strong, tall, muscular, handsome, and cheerful—his fit form belied his age. At 75 he was in remarkable shape and had no complaints. However, on rectal exam, I found a hard, prostate nodule the size of a pecan. His chart review indicated that his prostate examination was normal the year before. While rehearsing my thoughts about this fast-growing prostate tumor, I washed and rewashed my hands, not noticing that he was eyeing my nervous moves.

“So, what’s wrong, Doc?” He asked with a firm, assertive voice.

“We have a new problem,” I sighed, rearranging my face.

“It’s my prostate, isn’t it?”

“Yes,” I confessed. “You have developed a big mass since your last exam.”

“You mean a big cancer?”

“We’ll need a biopsy to prove that it is malignant.”

“And what do we do after we prove that it’s malignant?”

“You’ll have a workup to define the extent of the disease and then you’ll be offered treatment options.”

“Like surgery, or proton therapy, or castration?”

“You and your urologist will have to decide on the best treatment.”

“Two of my friends have been through that, Doc, and they both became impotent,” he frowned, unable to hide his dark thoughts.

“Let’s start with the biopsy and go from there,” I appeased.

“I respect you, Doc, but I’m having none of that treatment stuff.”

“What do you plan to do?” I beckoned.

“I plan to go home to my wife. I’m not letting such treatment stuff get between us. I’m a Veteran who has dodged the bullets in two wars, Doc. I believe this third one is gonna get the retired Veteran.”



Mr. Lorem did not schedule a return visit and Mrs. Lorem called and cancelled her annual appointment, leaving me mired in noir wonderings. But forgetfulness, the merciful balsam of bitter memories, slowly faded Mr. and Mrs. Lorem’s dilemmas out of my mind.

It took three years before Mrs. Lorem, at seventy-seven, resurfaced on the appointment book, resurrecting my

angst. I was eager to ask some questions, but I was also afraid of the answers. It took me a while to calm my heart. Then, after a deep stuttering sigh, I walked into the exam room.

“Mrs. Lorem, it’s so good to see you again,” I began.

“I’ve aged doctor. Don’t tell me that you haven’t noticed; I can see it in your eyes.”

“I’ve also aged, as you can see. It’s the natural order of things.”

“But you have aged well, and I haven’t,” she added and fell silent.

It was painful to see how fast she had decayed and what little gleam remained in her barren, expressionless face—a face once brimful with seasons. Rather than meeting her weather-beaten gaze, I busied myself with looking at her chart, hoping that she would be the one to fling open the conversation door. She did not. Instead, with unaware gaze, she stared at her feet.

Continues on page 32 ...



McBRIDE

ORTHOPEDIC HOSPITAL

CLINIC

Orthopedics
Joint Replacement
Arthritis
Spine
Physical Medicine
Sports Medicine

Appointments: 405.230.9270

Midtown | Edmond | Norman | Kingfisher | Lawton | Perry | Yukon

www.mcboh.com



“Mrs. Lorem,” I began, not knowing where to begin. “How is Mr. Lorem?”

With eyes still tethered to her feet, she muttered, “He died a year ago. He suffered horribly. He refused treatment. I was so upset with him that I neglected my own health, cancelled my appointment with you, and haven’t seen a doctor since. I know I’ve aged ten years in the past three.”

“I’m so sorry about his and your suffering. I did not believe him when he told me ‘I’m having none of that treatment stuff.’”

“He knew what he wanted, and he was determined to get it,” she added without elaborating.

“And how are you coping, Mrs. Lorem?”

“I’m a seventy-seven-year-old shadow, looking for a form,” she blurted. He was my entire life and I did not realize it. Now that he’s gone, I have no life. I’m just a shadow of my former self.”

“But, surely, you still have many meaningful things to live for.”

“Like what, Doctor? I have no children, no living relatives, and no passions because all my passions have died with him. I’m just a shadow, Doctor, just an angry, hungry shadow.”

“What are you hungry for, Mrs. Lorem?”

“I’m hungry for him, for his touch, his arms, his inseminating communion, his insatiable desire for my body and soul. I was the temple at whose altar he worshiped nightly. I bitterly regret my nagging complaints about his carnal passions. I was too stupid to realize that these extraordinary passions were indeed my main life force,” she sobbed.

“Relish the memory of your 57 years together and live in it, Mrs. Lorem. How many women can say their husbands made love with them every night for 57 years?”

“You know he tried to make love with me one week before he died, but he couldn’t because of his horrific bone aches. That was the only time I heard him cry.”

“These were telling tears. They said with a few drops what volumes of words could not have said.”

“You know that I still cry every night; I cry at the time when he used to reach for me.”

“But you are still a loving woman, a woman capable of so much giving because you have received so much.”

“No Doctor. I used to be a loving woman. Now I am shadow of a life whose glory I could not appreciate until it flew away.”



Mrs. Lorem and I hugged before she left. “You know, it feels so good to be hugged by a kind man again,” was the last thing she said to me.



A few months later, Genevieve Lorem’s picture appeared in the obituaries, young, beautiful, elegant, vibrant, with a smile as wide as the horizon. I did not try to find out how she died because I knew. She died of starvation—starvation for love, starvation for a man’s amorous arms, for a man’s insatiable desire, for a man’s adoring heart, and for a man’s nightly worship at the altar of her soul.



Time does not bring relief: you all have lied
Who told me time would ease me of my pain!
I miss him in the weeping of the rain;
I want him at the shrinking of the tide;

Time Does Not Bring Relief,
Edna St. Vincent Millay (1892-1950),
American poet

FOUR BALLETs CREATED IN THE UNITED STATES BY AMERICAN CHOREOGRAPHERS



MADE IN THE U.S.A.

JESSICA LANG

To Familiar Spaces in Dream
Oklahoma Premiere

NICOLO FONTE

Of Dreams and Dice
World Premiere

JEROME ROBBINS

2 & 3 Part Inventions
Oklahoma Premiere
With live piano

BRYAN PITTS

Variations for Six
With live music

FEB. 18-20

CIVIC CENTER MUSIC HALL

Get your tickets now!
(405) 848-8637
OKCBALLET.ORG



OKLAHOMA
CITY
BALLET

ROBERT MILLS, ARTISTIC DIRECTOR

CME INFORMATION

INTEGRIS HEALTH

Contact: **Jill Mayes, M.Ed.**, System Director of
Continuing Medical Education
Phone: 522-0926

MERCY HOSPITAL OKC

Contact: **May Harshburger**, CME Coordinator
Phone: 752-3390

SSM HEALTH ST. ANTHONY HOSPITAL MIDWEST

Contact: **Pam Spears**
Medical Staff Services Coordinator
Phone: 610-8363

SSM HEALTH ST. ANTHONY HOSPITAL

Contact: **Amy Mitchell**, Director of Medical Staff
Phone: 272-8431

OUHSC-IRWIN H. BROWN OFFICE OF CONTINUING PROFESSIONAL DEVELOPMENT

Contact: **Susie Dealy** or **Myrna Rae Page**
Phone: 271-2350
Check the homepage for the latest CME offerings:
<http://cme.ouhsc.edu>

OKLAHOMA ACADEMY OF FAMILY PHYSICIANS CHOICE CME PROGRAM

Contact: **Kari Webber, CAE**, Executive Director
Phone: 842-0484
Email: webber@okafp.org
Website: www.okafp.org

ORTHOPAEDIC & RECONSTRUCTION RESEARCH FOUNDATION

Contact: **Kristi Kenney**, CME Program Director
or **Tiffany Sullivan**, Executive Director
Phone: 631-2601

PROFESSIONAL REGISTRY

ALLERGY

OKLAHOMA ALLERGY & ASTHMA CLINIC, INC.

Dean A. Atkinson, M.D. *
Laura K. Chong, M.D. *
Maya Gharfeh, M.D.*
Richard T. Hatch, M.D. *
Bret R. Haymore, M.D.*
Gregory M. Metz, M.D. *
Patricia I. Overhulser, M.D. *
Shahan A. Stutes, M.D. *
Karen Gregory, DNP
Chelsea Robinson, APRN, CNP
Stefanie Rollins, APRN, CNP, AE-C
Elisa Thompson, APRN, CNP

* *Diplomate, American Board of Allergy and Immunology™*

**750 N.E. 13th St.
Oklahoma City, OK 73104
405-235-0040**

ENDOCRINOLOGY DIABETES & METABOLISM

MODHI GUDE, M.D., MRCP (UK), FACP, FACE

*Diplomate, American Boards of Internal Medicine and
Endocrinology, Diabetes & Metabolism*

South Office:
1552 S.W. 44th
Oklahoma City, OK 73119
405-681-1100

North Office:
6001 N.W. 120th Ct. #6
Oklahoma City, OK 73162
405-728-7329

*Practice limited to Endocrinology,
Diabetes and Thyroid only.*

Special Procedures:
*Bone densitometry for osteoporosis detection and management.
Diagnostic thyroid fine needle aspiration biopsy.
Diagnostic endocrine and metabolic protocols.*

PLASTIC SURGERY

OU PHYSICIANS PLASTIC SURGERY

Kamal T. Sawan, M.D.
Christian El Amm, M.D.
Suhair Maqusi, M.D.

Adult Clinic Location
OU Physicians Building
825 N.E. 10th St., Suite 1700
Oklahoma City, OK 73104

To schedule an appointment for Adult Services call
405-271-4864

Adult Services

Facelifts
Endoscopic Brow Lifts
Nose Reshaping
Eyelid Surgery
Liposuction
Breast Augmentation
Breast Reconstruction
Breast Reduction
TummyTuck
Skin Rejuvenation

Laser Hair Removal
Botox & Fillers
Body Contouring
After Weight Loss
Birth Defects
Hand Surgery - Dr. Maqusi
Microsurgery
Burn Reconstruction
Skin Cancer Excision
MOHs Reconstruction

Pediatric Clinic Location
OU Children's Physicians Building
1200 N. Phillips Ave., 2nd Floor Suite 2700
Oklahoma City, OK 73104

To schedule an appointment for Pediatric Services call
405-271-4357

Pediatric Services

Secondary Burn Reconstruction	Craniofacial Syndromes
Cleft Lip & Palate	Hemangiomas
Congenital Nevi	Traumatic Defects
Craniosynostosis	Vascular Lesions

UROLOGY

Urologists

at



Adult Urology

Michael S. Cookson, MD, Chairman
Urology Department, Urologic Oncology/Robotics
Ash Bowen, MD, General/Oncology/Robotics
Nathan Bradley, MD, General Urology
Brian Cross, MD, Urologic Oncology/Robotics
Daniel Culkin, MD, Men's Health/Stones/Oncology
James Furr, MD, Male Reconstructive/Robotics
Jonathan Heinlen, MD, Urologic Oncology/Robotics
Daniel Parker, MD, Urologic Oncology/Robotics
Sanjay Patel, MD, Urologic Oncology/Robotics
Mohammad Ramadan, MD, General/Oncology/Robotics
John Ross, MD, General Urology
Kelly Stratton, MD, Urologic Oncology/Robotics
Gennady Slobodov, MD, Male/Female/Reconstructive/
Incontinence/Neurogenic Bladder
James Wendelken, MD, General Urology

OU Physicians:

Adult Urology 405-271-6452
Edmond 405-340-1279
Stephenson Cancer Center 405-271-4088

Pediatric Urology

Dominic Frimberger, MD
Pediatric Urology/Reconstructive Surgery/Spina Bifida
Pediatric Urology/Robotics
Adam Rensing, MD, Pediatric Urology/Robotics
Bhalaajee Meenakshi-Sundaram, MD, Pediatric Urology/Robotics

OU Children's Physicians:

Urology 405-271-2006
Edmond 405-340-1279



ON LAMENTING A COUPLE'S LOSS OF INTIMACY.

The Spoons

Alone, tonight
I meditate and write
About the spoons.

How perfectly they lie
Together like a pair of moons.
In quietude
They glow and meet
Exchanging soul and heat
And moistened tunes.

I wonder why
No longer, you and I
Together lie
Like spoons?



HANNA A. SAADAH, MD

The background of the advertisement is a teal-colored image of a doctor in a white coat and tie, pointing forward. Overlaid on this is a network of white icons connected by lines, including a heart, a person, a briefcase, a stethoscope, a plus sign, and a medical cross. The OCMS logo, which includes a dollar sign, is prominently displayed in the center.

Renew your membership online at
www.okcountymed.org/pay

OCMS
OKLAHOMA COUNTY MEDICAL SOCIETY

*We look forward to
a healthier and brighter
2021!*

A top-down view of medical equipment on a blue surface. A silver stethoscope is positioned at the top, with its chest piece and tubing visible. A syringe with a needle is located in the bottom right corner. The background is a solid blue color.

MEDICAL BANKING

WITH



Quail Creek Bank

LEARN MORE AT **QUAILCREEK.BANK**



Oklahoma County Medical Society
313 N.E. 50th St., Suite 2
Oklahoma City, OK 73105-1830

Address Service Requested

PRESORTED
STANDARD
U.S. POSTAGE
PAID
OKLAHOMA CITY, OK
PERMIT NO. 381



YOU DESERVE THE BEST. INTRODUCING PLICO + MEDPRO GROUP

We're bringing the best of PLICO and MedPro to provide you unparalleled defense, expertise and service.

Protect your business, assets and reputation with Oklahoma's most dynamic healthcare liability solution. Call or visit us online to learn more.

405.815.4800 | PLICO.COM



ENDORSED BY:
OKLAHOMA HOSPITAL ASSOCIATION | OKLAHOMA STATE MEDICAL ASSOCIATION
OKLAHOMA OSTEOPATHIC ASSOCIATION

MedPro Group is the marketing name used to refer to the insurance operations of The Medical Protective Company, Princeton Insurance Company, PLICO, Inc. and MedPro RRG Risk Retention Group. All insurance products are administered by MedPro Group and underwritten by these and other Berkshire Hathaway affiliates, including National Fire & Marine Insurance Company. Product availability is based upon business and regulatory approval and differs among companies. Visit www.medpro.com/affiliates for more information. ©2016 MedPro Group Inc. All Rights Reserved.